

WHY PAY MORE FOR LESS?



Konkore
FITTINGS

A PART OF **atkore**
INTERNATIONAL

Universal Super Connector & 5 Piece Coupling

Universal connecting - Threaded to Threaded,
Threaded to Unthreaded and Unthreaded to
Unthreaded GRC/IMC/EMT

For more info, visit konkore.com



FEATURES

- Ease of installation/Quick-connect
- Universal connecting
 - ♦ Threaded to Threaded
 - ♦ Threaded to Unthreaded
 - ♦ Unthreaded to Unthreaded
- No more turning Pipe
- Self Pipe Alignment
- Eliminates field threading
- Eliminates/replaces various fittings:
 - 3 piece coupling
 - Split coupling
 - Threadless coupling
 - RIGID Coupling
 - HUB
 - Threadless Connector
- Fit GRC/IMC/EMT

BENEFITS

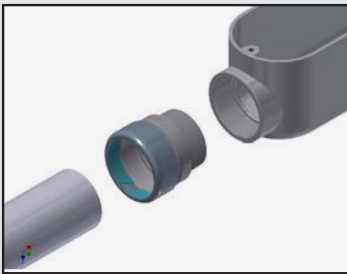
- Up to 50% Material Cost Savings
- No need to turn the pipe
- No need to thread the pipe
- No need to disassemble the coupling
- Better pipe alignment
- Reduce waste/rework
- Perfectly work in corner and tight space
- Inventory Management (Less SKUs)
- U.S. Patent No. 8.586.881
- UL 514B



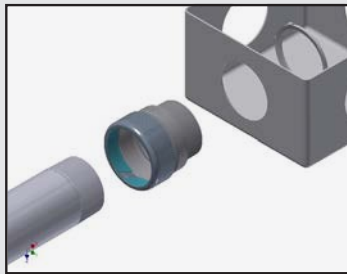
FEATURES

- Used to join two lengths of conduit; couples conduit when conduit cannot be turned
- Threaded GRC/IMC to Threaded GRC/IMC
- Threaded GRC/IMC to Unthreaded GRC/IMC/EMT
- Unthreaded GRC/IMC/EMT to Unthreaded GRC/IMC/EMT
- UL Concrete-tight
- c UL us listed UL 514B; C22.2 No. 18.3-12

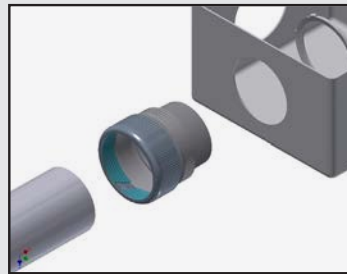
SRCC CONNECTOR
Unthreaded GRC/IMC/EMT
to Conduit Body



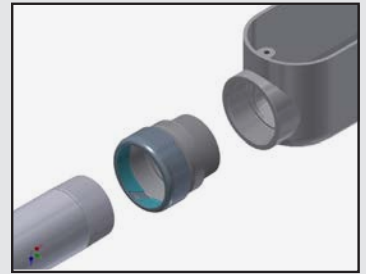
SRCC CONNECTOR
Threaded GRC/IMC
to Metal Box



SRCC CONNECTOR
Unthreaded GRC/IMC/EMT
to Metal Box

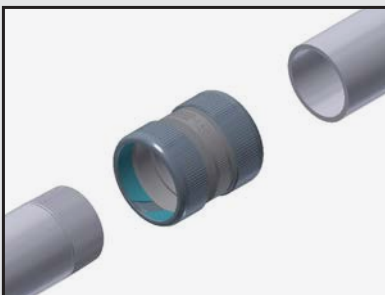


SRCC CONNECTOR
Threaded GRC/IMC
to Conduit Body

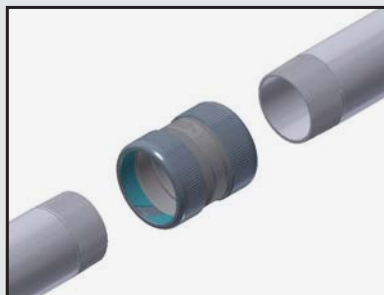


CATALOG NUMBER	TRADE SIZE	DIM A	DIM B	INNER PACK	WEIGHT PER EACH
SRCC250KON	2-1/2"	3.460	3.450	2	2.1
SRCC300KON	3"	3.490	4.080	1	2.7
SRCC350KON	3-1/2"	3.730	4.590	1	3.4
SRCC400KON	4"	3.810	5.090	1	3.9
SRCK250KON	2-1/2"	4.160	3.450	2	2.3
SRCK300KON	3"	4.120	4.080	1	2.9
SRCK350KON	3-1/2"	4.450	4.590	1	3.8
SRCK400KON	4"	4.500	5.090	1	4.3

SRCK COUPLING
Threaded GRC/IMC to
Unthreaded GRC/IMC/EMT



SRCK COUPLING
Threaded GRC/IMC to
Threaded GRC/IMC



SRCK COUPLING
Unthreaded GRC/IMC/EMT to
Unthreaded GRC/IMC/EMT

